

Instructions for upgrading Firmware for Indigo Ice Machines

Step 1: *You must use a formatted 2 GB or smaller Flash drive according to Service Communicator MII-070. This procedure can be downloaded from the Manitowoc Ice website www.manitowocice.com*

Caution: *Not following this procedure may impede the upgrade process.*

Note: *The following instruction for Upgrading Firmware applies to upgrades for the Indigo E, G, and H Control boards.*



Indigo E Board (Green) 2.XXX



Indigo G Board (Blue) 4.XXX

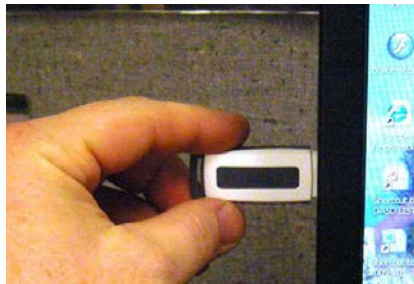


Indigo H Board (Red) 5.XXX

At a Windows Based Computer (PC)

Step 2: Download Firmware from website, www.manitowocice.com to your computer.

Step 3: Insert 2 GB or Smaller Flash drive into computer and Format according to Parts and Service Communicator MII-070 (06/11)

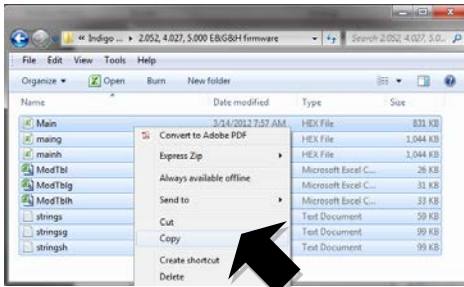


Inserting Flash Drive into Computer

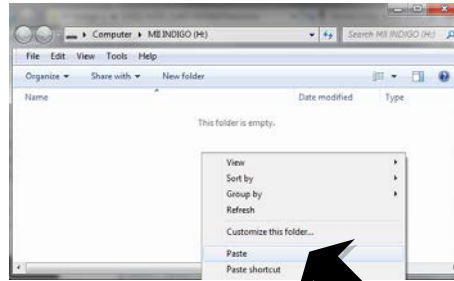
Step 4: Open E&G Firmware Zip and then open the folder.

Do not change or rename the files as that will impede the upgrade process.

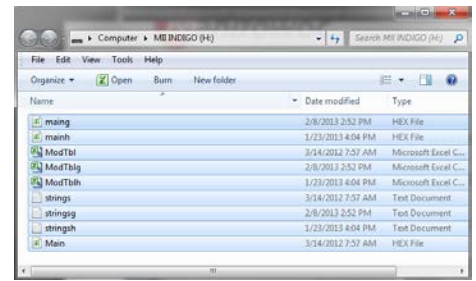
1. Copy the **nine** files and paste them onto your properly sized and formatted flash drive.



Copy all 9 files from your Computer



Paste all 9 files on to your Flash Drive



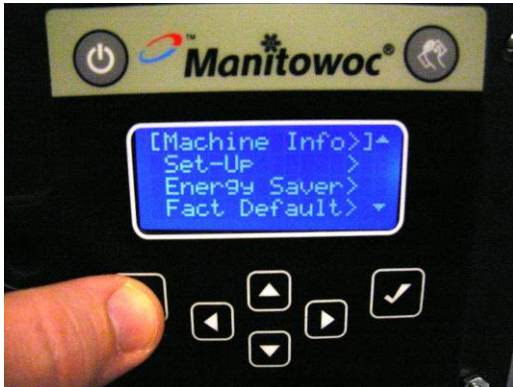
Confirm that all 9 files are on the Flash Drive

- **Note: All revisions (for E, G & H Firmware) will be loaded onto one flash drive. The Indigo Ice Machine control board will automatically select and load the correct file from the flash drive.*

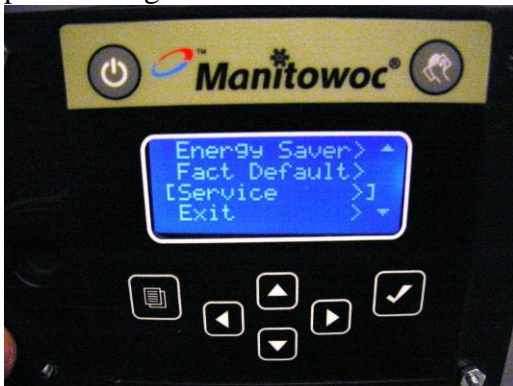
Step 6: Remove Flash drive from computer (*suggestion: mark flash drive with the firmware revision to identify at a later date.*)

To Upgrade Firmware on the Indigo Ice machine

1. Press Menu Button



2. Scroll Brackets down to Service and press the right Arrow.



3. Scroll Brackets down to USB Setup and press the Right Arrow.



4. With Brackets around USB Stick, press the Right Arrow.



5. Insure Brackets are around Download Frm and press the Right Arrow



6. Insert Flash Drive with loaded firmware into the USB port on the Control board



7. Press Check after the flash drive is inserted
8. Wait for Completion (this may take up to 5-10 min)



****Caution, Not following the instructions may impede upgrade process**. While upgrading firmware:**

- ***Do Not Disconnect power***
- ***Do Not Remove Flash Drive***
- ***Do Not press any of the interface buttons***

Once complete the display goes back to the home screen and the Control Board's green LED lights begin to flash again.



Indigo E Board (Green)



Indigo G Board (Blue)



Indigo H Board (Red)

9. Remove flash drive and check Firmware Revision under Machine information for proper loading, refer to Menu navigation diagram.
10. Cycle Power (*disconnect power and reapply power*) to the ice machine.
11. Check for Proper Ice Machine Operation.